



**G·E·M·I·N·I**<sup>®</sup>  
ceramic wall & floor tile collection

## **CORE COLLECTION**





## CORE COLLECTION

### CORE WALL

Reflections	Page 4-5
Simplicity	Page 6-7
Metro Bevelled	Page 8-9
Metro Flat	Page 10-11
Dolomite	Page 12-13
Dorset	Page 14-15

### CORE FLOOR

Arkitekt Dotti	Page 16-17
Metro	Page 18-19

### SUNDRIES

Tile Adhesive & Grout	Page 20
Tile Trims & Spacers	Page 21

*Pictured: Metro Bevelled*

GEMINI is a registered trademark of Saint-Gobain Building Distribution Limited.

# REFLECTIONS

150x150x6.5mm



White\*  
A0014780



White Satin\*  
A0014781



Cream  
A0014786



Dove\*  
A0014807



Beige\*  
A0014787



Light Grey\*  
A0014785



Mid Grey\*  
A0014784



Black  
A0014799

\* Selected colours also available in 400x150x10mm.  
Please contact your representative for more information.

200x200x6.5mm



White  
A0014808



White Satin  
A0014809



# SIMPLICITY

---

150x150x5.5mm



Bumpy White Gloss  
A0010211

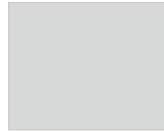


Bumpy Cream Gloss  
A0010210

250x200x6.5mm

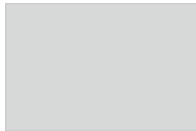


Bumpy White Gloss  
B0004171

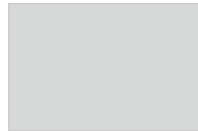


White Gloss  
B0015547

300x200x7mm



White Satin  
B0043056



White Gloss  
B0043055



# METRO BEVELLED

---

200x100x8mm



White Gloss  
A0017845



Beige Gloss  
A0017847



Dark Grey Gloss  
A0017848



Black Gloss  
A0017846



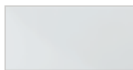
# METRO FLAT

---

200x100x8mm



White Matt  
A0017853



White Gloss  
A0017852



Beige Gloss  
A0017849



Dark Grey Gloss  
A0017850



Black Gloss  
A0017851



# DOLOMITE

---

300x200x7mm



Beige Gloss  
B0043057



Grey Gloss  
B0043058



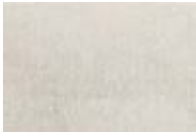
Greige Gloss  
B0043059



# DORSET

---

300x200x7mm



White Matt  
B0043062



Light Grey Matt  
B0043060



Dark Grey Matt  
B0043061





# ARKITEKT DOTTI

---

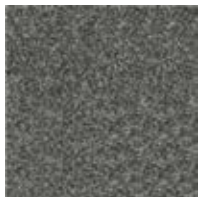
300x300x8mm



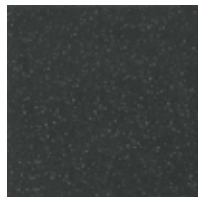
Ivory Matt Surface  
B0015182



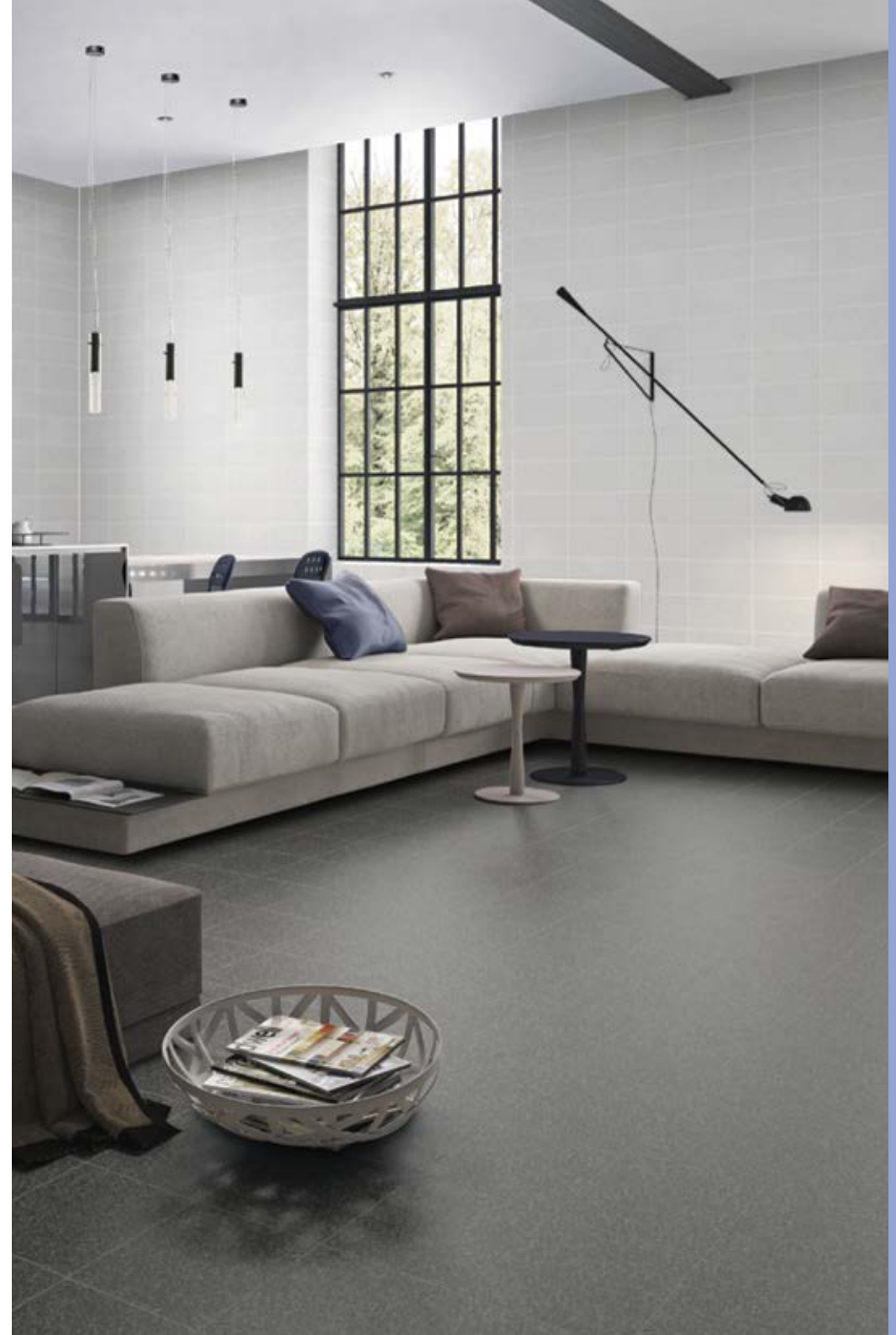
Light Grey Matt Surface  
B0015183



Dark Grey Matt Surface  
B0015184



Antrasit Matt Surface  
B0015186



# METRO

---

300x300x7mm



Beige  
B0037925



Schlamm  
B0037922



Grey  
B0037923



Anthracite  
B0037924



# ONE STOP SHOP FOR ALL YOUR TILING NEEDS!

CLICK AND COLLECT AT TRADE CENTRES NATIONWIDE

## Order tiles and supplies with the **New CTD Housebuilder Ordering Portal**

Your tile fixers can order with ease using the new and exclusive ordering portal. Fixers select products directly from the product specification and organise delivery or collection at their convenience. The **CTD Housebuilder Ordering Portal** lets tile fixers get to work.

[www.ctdtiles.co.uk/housebuilders](http://www.ctdtiles.co.uk/housebuilders)



### Tile Adhesive



#### 15kg **Weber Fix Plus Adhesive**

- ✓ Water-resistant for intermittently wet areas
- ✓ Sets in 24 hours
- ✓ High initial grab — non-slip formula
- ✓ Suitable for heavier or larger tiles

C0001089



#### 15kg **Weber Fix WR Adhesive**

- ✓ Water-resistant for intermittently wet areas
- ✓ Sets in 24 hours
- ✓ High initial grab — non-slip formula

C0001091



#### 20kg **Weber Set Plus Adhesive**

- ✓ Extra strong bond — suitable for large format tiles
- ✓ Suitable for ceramic, porcelain and natural stone
- ✓ High grab — non-slip for walls and floors

**Grey** C0001687  
**White** C0001374



#### 20kg **Weber Set Trade S1 Rapid Set Flexible Adhesive**

- ✓ Rapid setting — ready for grouting after 2 hours
- ✓ Suitable for wooden floors overboarded with WBP plywood or suitable tile backer board
- ✓ Can be used as a pourable adhesive

**Grey** C0002250  
**White** C0002397

### Tile Grout



#### 5kg **Weber Joint Wall White Grout**

- ✓ Anti-scratch formulation
- ✓ Lasting protection from mould growth
- ✓ Water-resistant — reduced water penetration and improved resistance to staining

C0001015



#### 5kg **Weber Joint Premium Wall and Floor Grout**

- ✓ Rapid setting and water repellent
- ✓ Flexible for all tile types
- ✓ Pure Clean anti-stain technology
- ✓ For joint widths from 1 - 20 mm

**White** ..... C0002794  
**Grey** ..... C0002800  
**Silver Grey** C0002801

### Tile Trims



#### 2500mm **Genesis Aluminium Tradeline Straight Edge Trim**

- ✓ Trade grade aluminium profile for durability during and after installation
- ✓ Contemporary straight edge finish
- ✓ Protective film only on the seen edge, ensuring protection of the profile until installation is complete

**Bright Silver:** 8mm D0010520 | 10mm D0010521 | 12mm D0010522  
**Brushed Effect:** 8mm D0010523 | 10mm D0010524 | 12mm D0010525



#### 2500mm **Genesis Regular White Trim**

- ✓ Strong closed face design provides durability and rigidity, even after installation
- ✓ Other colours available

**6mm** D0000614  
**10mm** D0000625



#### 2500mm **Genesis PVC Straight Edge White Trim**

- ✓ Contemporary straight edge finish
- ✓ Other colours available

**8mm** D0003525  
**10mm** D0001291



#### 2500x15x8mm **Genesis PVC Vinyl to Tile White 'EVT' Trim**

D0000654



#### 2500x15x8mm **Genesis PVC Vinyl to Tile White 'EVC' Trim**

D0002762

### Tile Spacers



#### **CTD Trade Cross Spacers** (Bucket of 2000)

- ✓ Manufactured in the UK
- ✓ Professional grade
- ✓ Suitable for all applications
- ✓ Cross and T spacers available in various sizes

**2mm** D0010171 | **3mm** D0010174



ceramic tile distributors

Home of the exclusive



ceramic wall & floor tile collection



## About Us

**CTD offers national housebuilders and regional developers an end-to-end service with exceptional standards. From affordable housing to prestige properties, we will meet the requirements of any development, providing a superior experience for developers and buyers.**

As part of Saint-Gobain (SGBD) Group, the world's largest purchaser of ceramic tiles, we are able to source products from all over the world and are committed to finding the best possible solution for our clients. We boast unrivalled knowledge and product portfolio with a devotion to providing quality customer service from start to finish.

Our team of dedicated account managers and specification support staff are ready to assist you with all aspects of your development.

## What We Offer

**With over 50 years of success and a dedicated team of 650 staff nationwide, we are the housing industry's supplier of choice.**

### Tile Selection

Working to your requirements we create a tailored collection of quality tiles which offers current trends and timeless classics to your customers.

### Guaranteed Pricing Period

With the ability to hit specific price points and ranges to meet build requirements, we offer price bands to suit all budgets.

### Merchandising

Working with Europe's leading tile display stand manufacturers enables you to achieve any bespoke display needs. We can supply fully uniform sample boards for your sales centres, as well as full showhome support.

### Brochures

The high standard of our product portfolio is demonstrated with a bespoke PDF brochure which boasts inspirational photography.

### Ordering Portal

The CTD Housebuilder Ordering Portal allows tiling contractors to order directly from the product specification, ensuring a smooth experience which lets fixers get to work.

### On-Site Training

Partnerships with market leading suppliers enable us to offer technical support and training advising of best practices to comply with BS5385 (British Standards).

### Delivery

With a network of depots and trade outlets nationwide, tiling contractors can collect or request delivery at their convenience.

### Design Tools

Our online design tools allow customers to experiment with different products from the portfolio in order to make an informed decision.

### Digital Marketing

Working in partnership with developers, we promote collaborative projects using case studies on our website and across social media platforms.





ceramic tile distributors

**Head Office:**

Ceramic Tile Distributors  
351 Shields Road  
Newcastle upon Tyne  
NE6 2UD

[www.ctdtiles.co.uk/housebuilders](http://www.ctdtiles.co.uk/housebuilders)

